

385C FS

Front Shovel



Operating Weight
with 4.6 m boom, 3.48 m stick,
650 mm shoes, 5.7 m³ rock bucket

92 100 kg

Cat® C18 ACERT Diesel Engine

Flywheel Power

390 kW/523 hp

Maximum Travel Speed

4.5 km/h

385C FS Hydraulic Excavator

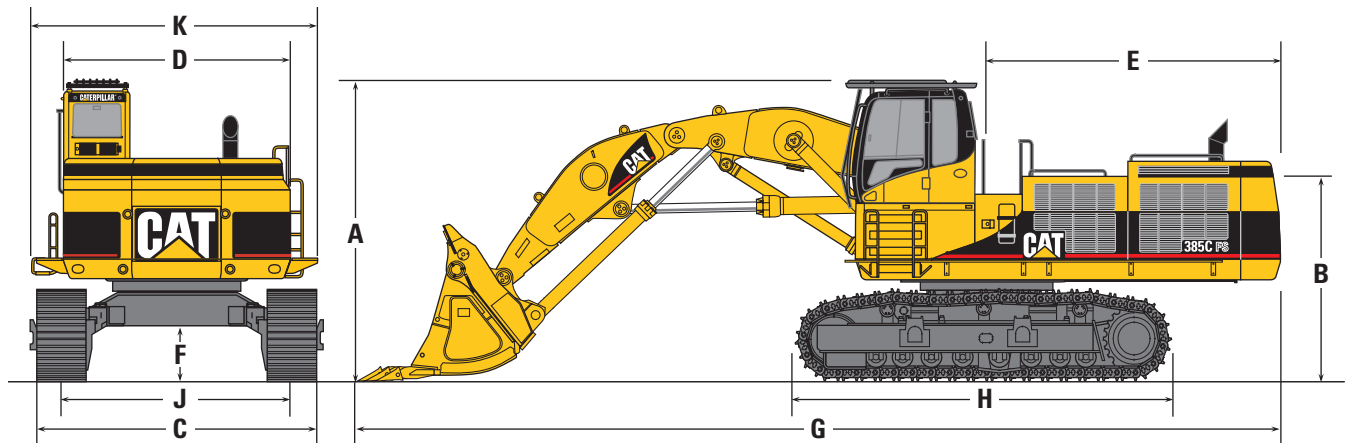
New Cat C18 Diesel Engine with ACERT Technology. It controls the combustion process to reduce pollutant levels maintaining performance and efficiency. Net power 390 kW (523 hp), 6 cylinders, 18.1 liter displacement, Stage II emission compliant.

New Cab. This new, modernized cab offers optimum operator comfort and increased visibility.

New Grease Lubricated Tracks (GLT4). They extend internal pin and bushing wear life by as much as 2500 hour.



Specifications and Dimensions



	mm		mm		mm
Boom	4600	A Overall height		E Tail swing radius	4590
Stick	3480	Boom top height	4500	F Minimum ground clearance	850
Maximum reach	10 350	Cab top height with cab riser		G Overall length	14 250
Maximum reach at ground level	9900	without FOGS	4660	Counterweight removed	13 800
Maximum level crowd distance	3920	B Body height*	2966	Bucket and stick removed	8600
Maximum digging depth	2850	C Overall width (retracted)		Boom, bucket and stick removed	7460
Maximum digging height	11 260	650 mm shoes	3400	H Track length	5840
Maximum dump height	7430	750 mm shoes	3500	J Track gauge width	
Reach at maximum dump height	5780	C Overall width (extended)		Extended position	3510
		650 mm shoes	3900	Retracted position	2750
		750 mm shoes	4000	K Width over walkways	4390
		D Upperstructure width*	3470		

* without mirrors and handrails

Bucket Specifications

	Capacity	Width	Tip Radius	Weight (without tips)
	m ³	mm	mm	kg
Reinforced Rock	4.6	2630	2660	9800
Rock	5.7	2760	2765	10 035
Rock with spill plate	5.7	2760	2930	10 180
Heavy Duty Rock	5.2	2760	2930	10 417
	5.7	2760	2765	10 781

Materials and specifications are subject to change without notice. Featured machines in photos may include additional equipment. See your Caterpillar dealer for available options.

Hydraulic System

Maximum flow	
Equipment pumps	2 x 475 l/min
Swing pump	460 l/min
Maximum pressure	
Main – normal	295 bar
Main – heavy lift	325 bar
Travel	325 bar
Swing	260 bar