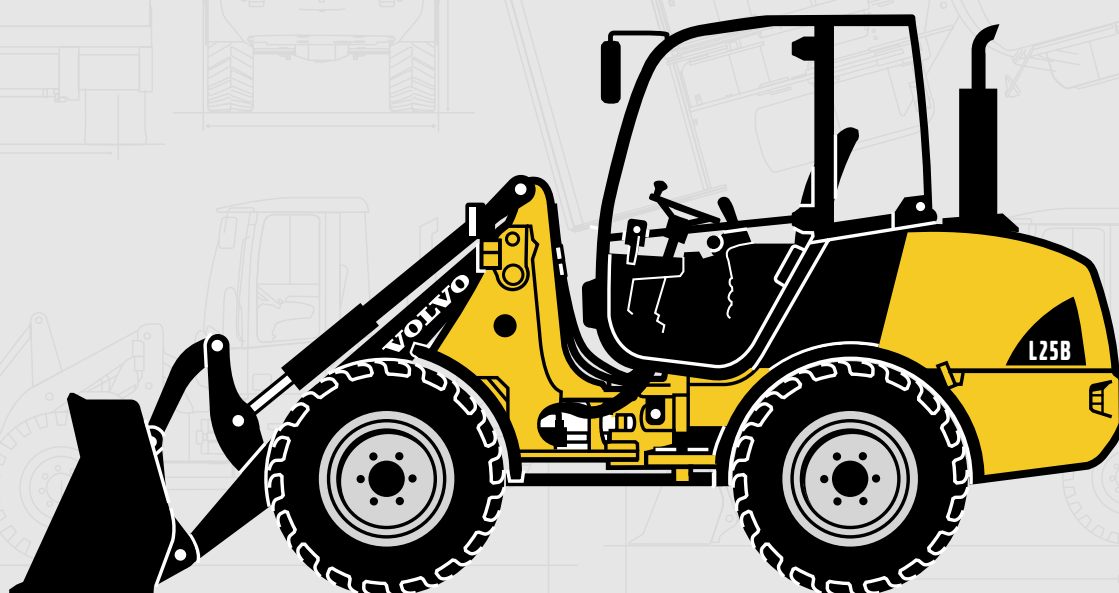


VOLVO COMPACT WHEEL LOADER

L25B



- **Gross Power:**
SAE J1995 45,2/61,5 kW/hp
Net Power:
SAE J1349 43,5/59,1 kW/hp
- **Operating Weight:**
4,8 - 4,9 t
- **Bucket Capacities:**
0,85 - 1,5 m³
- **High-performance, low environmental impact diesel engine:** quiet, low emissions, economical fuel consumption.
- **Hydrostatic drive with significant advantages:**
 - Easy to operate due to automatic drive facility.
 - Maintains high drawbar pull even when working hydraulics are engaged.
 - Advantageous hydrostatic brakes, wear-free and safe.
- **Powerful parallel loader linkage** for excellent loading-fork lifting ability.
- **Operator-selected 100% differential lock** on both axles to give optimum traction.
- **Standard hydraulic quick-change coupling:** Various tried-and-tested attachments for a wide range of applications.
- **Purpose designed cab comfort:**
 - Audio-visual warning system for monitoring operating systems
 - Multi-function lever.

VOLVO

The L25B in detail

Engine

Volvo in-line 4-cylinder, 4 stroke, direct injection diesel engine with turbocharging, oil/air cooled.

Air cleaning:

1. Paper filter with indicator in cab
2. Safety filter

Engine	Volvo D3D-C-B-E1
Gross power @	2300 r/min
SAE J1995	45,2 kW
SAE J1995	61,5 hp
Net power @	2300 r/min
SAE J1349 - DIN ISO 1585	43,5 kW
SAE J1349 - DIN ISO 1585	59,1 hp
Max torque @	1700 r/min
SAE J1995 netto	190 Nm
DIN ISO 1585	190 Nm
Cubic capacity	3,10 l
Bore	94 mm
Stroke	112 mm

Electrical system

Rated voltage	12 V
Battery voltage	12 V
Battery capacity	88 Ah
Alternator rating	1120/80 W/A
Starter motor output	2,2 kW

Drivetrain

Transmission: hydrostatic transmission, full power shift under load, both when changing direction (forward and reverse) and between ranges. Maximum drawbar force can be achieved in all ranges. «Inch/brake pedal» for variable machine speed control and power transfer to bucket hydraulics at constant engine rpm. Multi-function lever for change of direction, differential lock and use of the hydraulic-control.

Axles: all-wheel drive by two rigid axles

Differential locks: hydraulically actuated 100% differential locks in both axles.

Frame: solid front and rear frame, robot-welded. Articulating oscillating joint for optimum manoeuvrability and traction.

Oscillation at wheel, max.	245 mm
Track	1410 mm
Angle of oscillation	±10°
Tires: Size	12.5-18
Rim	11 x 18

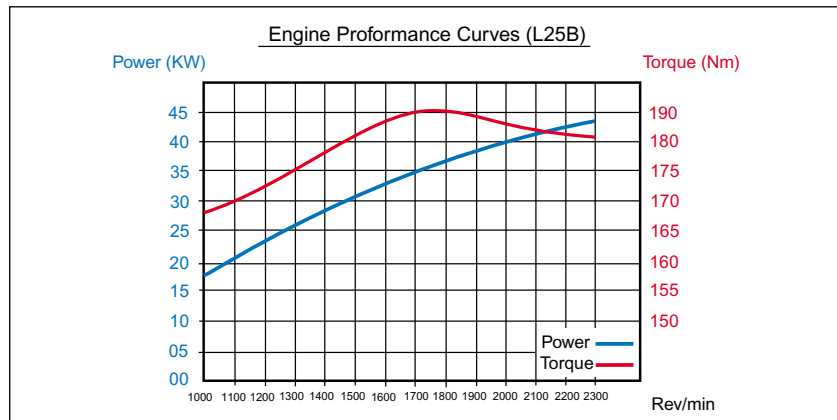
Maximum speed

1st range forward/reverse	5,0 km/h
2nd range forward/reverse	20,0 km/h

Brake system

Service brake: reliable dual braking system, acting upon all four wheels.

1. Wear-free, hydrostatic inching brake
2. Central friction brake, actuated via «inch/brake pedal». First stage of pedal application actuates the inching facility, the last third of pedal application applies the central friction brake.



Parking brake: central drum brake, acting upon all four wheels.

Steering system

Hydrostatic steering. Central articulating-oscillating joint.

Steering pump: gear-type pump

Steering cylinder: 1 double-acting steering cylinder

Steering

Angle of articulation	±38°
Steering pump	
Flow	25 l/min
@ engine rpm	2300 r/min
Relief valve pressure	18,5 MPa

Cab

Instrumentation: All important information is centrally located in the operator's field of vision.

Hydraulic system

Thermostatically controlled oil circuit with integrated cooling system.

Hydraulic control valve: double acting control valve with three spool system, with primary and secondary pressure valves.

1. Lifting function
2. Tilting function
3. Additional function for hydraulic QC Unlock, neutral, lock. Preparation for operating hydraulic attachments with this function is available as an option.

Hydraulic oil filter: Combined suction and return-filtration cartridge with a 10 µm filter. The filter can be replaced without emptying the hydraulic oil tank.

Hydraulic pump: gear type-pump

Hydraulic pump

Flow	52 l/min
@ engine rpm	2300 tr/min
Relief valve pressure	23 MPa

Linkage

Parallel linkage with high breakout force and exact parallel lift-arm action.

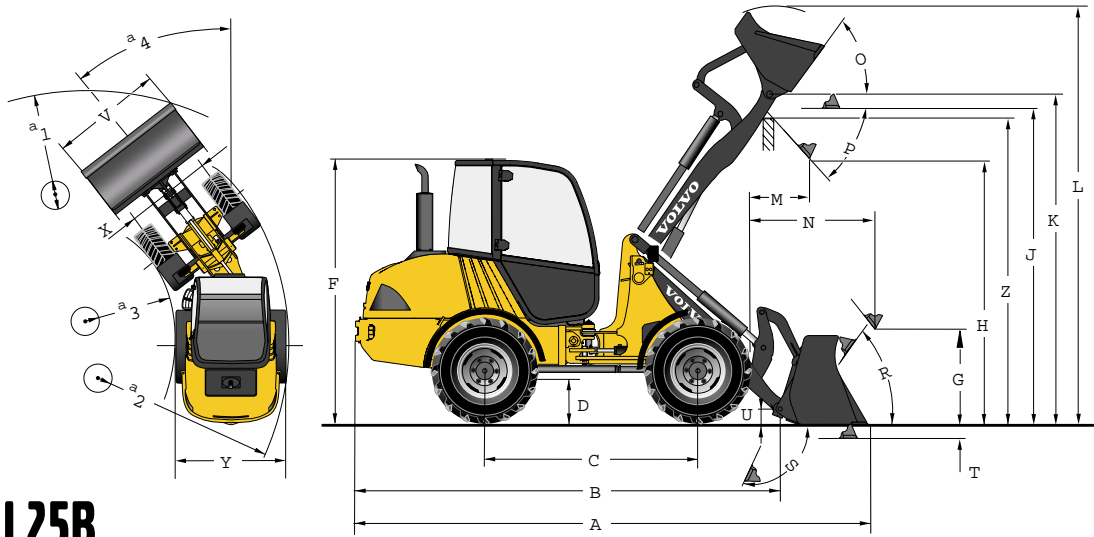
Lift cylinders	1
Tilt cylinders	1

Lift time (loaded)	6,0 s
Lowering time (empty)	4,0 s
Dump time	2,0 s
Crowd time	1,5 s

Service fill Capacities

Engine	10,5 l
Fuel tank	60,0 l
Front axle, total	4,1 l
Rear axle,	
incl. drop-box	5,8 l
Hydraulic tank	42,0 l
Hydraulic tank, incl. hydraulic system	60,0 l

Specifications



L25B

L25B with parallel-linkage, Z-attachment carrier and 12.5-18 tires		
B	4265	mm
C	2050	mm
D	320	mm
F	2475	mm
G	840	mm
J	2990	mm
K	3140	mm
O	56	°
P	45	°
R	54	°
S	65	°
U	145	mm
X	1410	mm
Y	1735	mm
Z	2895	mm
a ₂	3880	mm
a ₃	2100	mm
a ₄	±38	°

Data according to bucket type		General Purpose		Light Material		4-in-1	High-Tip
L25B with parallel-linkage, Z-attachment carrier and 12.5-18 tires							
Capacity heaped	m ³	0,85	1,0	1,2	1,5	0,8	1,1
Material density	kg/m ³	1900	1600	1300	1000	1800	1200
Static tipping load, straight (ISO / DIS)	kg	3800	3750	3700	3600	3400	3100
Static tipping load, full turn 38° (ISO / DIS)	kg	3400	3350	3300	3200	3050	2800
Hydraulic lifting capacity, max.	kN	41,0	40,2	39,5	38,0	37,8	34,0
Breakout force	kN	37,0	32,5	29,0	25,0	35,7	-
A Total length	mm	5085	5185	5285	5435	5110	5500
L Lift height, max.	mm	4100	4195	4290	4430	4085	4890
V Bucket width	mm	1800	1800	1800	1800	1800	1800
a ₁ Clearance circle	mm	8370	8425	8480	8570	8405	8610
T Digging depth	mm	105	105	105	105	145	105
H Dump height	mm	2480	2410	2340	2230	2410	3550
M Reach at max. height	mm	675	745	815	920	635	985
N Reach, max.	mm	1495	1560	1635	1735	1455	2115
Operating weight	kg	4800	4830	4860	4900	5010	5140

Data with Loading Fork		L25B - Possible machine variations	
Centre of gravity 500 mm			
Tipping load, full turn (ISO / DIS)	kg	2670	
Payload according to EN 474-3, 60/80%	kg	1600/2100	
Payload 80%, transport position, 38° full turn	kg	2500	
		Linkage/attach. carrier	Standard
		Parallel / Z	●

STANDARD EQUIPMENT

Engine

Diesel engine, direct fuel injection
Extra fuel filter
Cold start aid
Dry-type air filter

Electrical system

Alternator 80 A

Lighting:

Main head lights (halogen)
full/dipped/asymmetrical

Parking lights

Rear lights

Brake lights

Direction indicators

Hazard warning lights

Reversing lights

Cab lighting

Instrumentation & controls:

Multi-function lever
12 Volt accessories socket
Horn
Hazard warning switch
Safety start

Analogue information for:

Fuel level
Operating hours

Illuminated symbols

(colour-coded) for:
Differential locks
Battery charging
Indicators (left/right)
Main beam
Pre-heater
Direction (forward/reverse)
Travel (quick, slow)

Fuel level
Reserve fuel indicator

Illuminated symbols with acoustic signal

(with ignition on) for:
Engine temperature
Engine oil pressure
Hydraulic oil temperature
Hydraulic oil filter
Air filter restriction
Parking brake

Drivetrain

Hydrostatic drive
Operator-selected 100%
differential locks

Tires 12.5-18

Cab Exterior

Removable ROPS/FOPS-cab with flexible
mountings

Lockable door

All-round tinted safety glass

Windscreen wiper (front/rear)

Windscreen washer (front/rear)

Openable window on the right
side of the machine

Door stops

External rear view mirrors

(right/left)

Cab Interior

4-way adjustable operator's
seat

Seat belt

Sunvisor

Heater with air-filter and
defroster (front/rear)

Cab ventilation

Lockable storage box in the cab

Hydraulic system

Gear-type pump

Control valve three-spool
system

3rd hydraulic circuit

Carriage Body

Fenders and mudguards,
(front/rear)
Lockable engine hood
Vertical exhaust
Towing device
Lifting eyes

Service and maintenance

Tool kit
Wheel nut wrench

International Standards for Machines and

Production

Quality:
DIN/ISO 9001
Safety:
CE - Criteron
Machine guide-lines 98/37/EC
ROPS ISO 3471
FOPS ISO 3449
Operating weight
ISO 7131
Tipping load / Payload:
ISO / DIS 14397-1
EMV (Electromagnetic
Compatibility)
89/336/EEC plus supplement
Environment:
DIN/ISO 14001
Sound insulation:
86/622/EEC, amendment
95/27/EC
German environmental seal
«low noise» RAL - UZ 53

OPTIONAL EQUIPMENT

(Standard on certain markets)

Engine equipment

Pre-heater
Pre cleaner air filter (Turbo II)
Double action air filter
Exhaust particle filter

Cab

Handthrottle
Hand control inch valve
Airconditioner
Radio
Working lights (2 front/2 rear)
Air suspension operator's seat

Hydraulic system

Additional hydraulics for
3rd hydraulic circuit
4th hydraulic circuit
Additional pump

Environment

Initial filling of biodegradable
hydraulic oil

Safety

Anti-theft system
Protective guards for:
Main head lights
Working lights
Rear lights
Rotating beacon
Audible reverse alarm

ATTACHMENTS

A small selection of the most popular attachments:

Loading Fork
4-in-1 Bucket
Material Handling Arm
Sweeper
TreeTransplanting Bucket
Side-Tip Bucket
High-Tip Bucket
Hay/Manure Fork
Snow Plow

Further buckets and attachments available on
request.



Technology on Human Terms

Volvo Construction Equipment is one of the world's leading manufacturers of construction machines, with a product range encompassing wheel loaders, excavators, articulated haulers, motor graders and more.

The tasks they face vary considerably, but they all share one vital feature: technology which helps man to perform better: safely, efficiently and with care of the environment. We refer to it as Technology on Human Terms.

The sheer width of the product range means it is always possible to choose exactly the right machine and attachment for the job. Each machine also comes with the quality, continuity and security which is represented by the Volvo name. The strength of the service and parts organisation;

the security of always having immediate access to leading-edge research and technical development are part of the Volvo name. A machine from Volvo meets the very highest demands in all kinds of jobs, under all conditions the world over.

Volvo Construction Equipment develops, manufactures and markets construction equipment. We are a Volvo company with production facilities on four continents and a market presence in over 100 countries.

For more information please visit our web site:
www.volvo.com

All products are not available in all markets. Under our policy of continuous improvement, we reserve the right to change specifications and designs without prior notice. The illustrations do not necessarily show the standard version of the machine.

VOLVO

Construction Equipment

Ref. No. 21 1 430 5527 English
Printed in Germany 2002.06 CWL
Volvo, Konz